

WWCI Series

SMD Wire Wound Ceramic Inductor

Size 0805



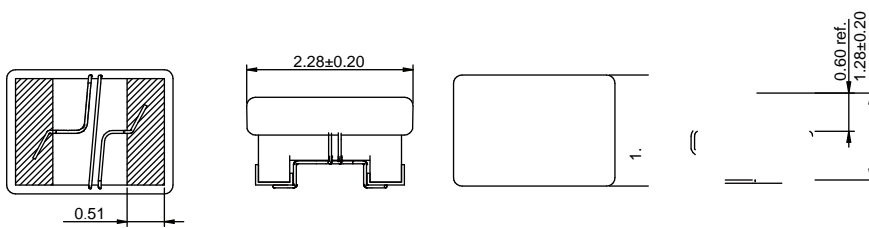
CHARACTERISTICS

- Wire wound with high Q and high SRF
- More stable due to ceramic design
- Small size and small tolerance available
- Quantity: 2000pcs

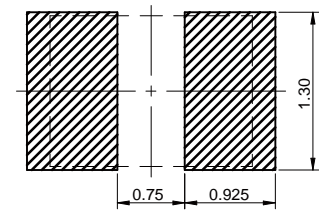
APPLICATION

- HF application

Dimensions: [mm]



Land Pattern: [mm]



Electrical Properties:

Part No	Inductance (nH)	Test @MHz	Tolerance	Q Min.	Test Q @MHz	Temperature Rise Current Max. (mA)	DCR Max.	SRF Min. (MHz)
WWCI0805-2N7B	2.7	250	±0.2 nH	35	1000	800	0.08	6000
WWCI0805-3N3B	3.3	250	±0.2 nH	60	1000	800	0.08	6000
WWCI0805-3N9B	3.9	250	±0.2 nH	60	1000	600	0.06	6000
WWCI0805-4N7B	4.7	250	±0.2 nH	60	1000	600	0.06	5800
WWCI0805-5N6J	5.6	250	±5%	40	1000	600	0.1	5500
WWCI0805-6N8J	6.8	250	±5%	50	1000	600	0.11	5500
WWCI0805-8N2J	8.2	250	±5%	60	1000	600	0.06	5500
WWCI0805-10NJ	10	250	±5%	60	500	600	0.08	4800
WWCI0805-12NJ	12	250	±5%	45	500	600	0.15	4000
WWCI0805-15NJ	15	250	±5%	50	500	600	0.17	3400
WWCI0805-18NJ	18	250	±5%	50	500	500	0.2	3300
WWCI0805-22NJ	22	250	±5%	60	500	600	0.1	3300
WWCI0805-27NJ	27	250	±5%	60	500	600	0.12	2600
WWCI0805-33NJ	33	250	±5%	60	500	500	0.15	2400
WWCI0805-39NJ	39	250	±5%	50	500	500	0.29	2000
WWCI0805-47NJ	47	200	±5%	60	500	500	0.15	1700

Typical Electrical Characteristics:

Inductance VS. Frequency Characteristics:

INDUCTANCE(mH)